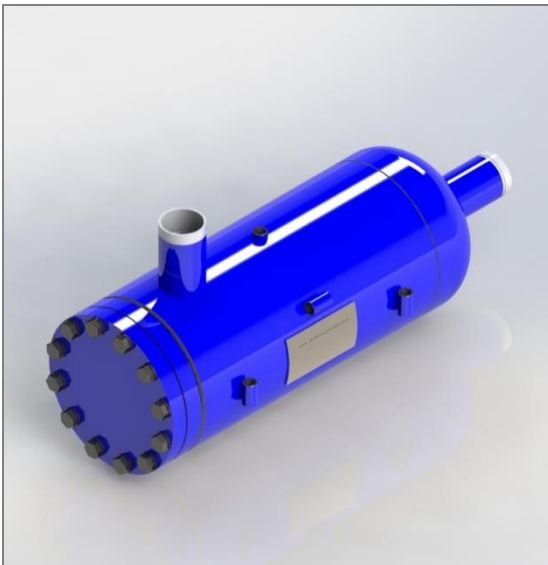


**Coalescing Oil Separator
for Reciprocating Compressors
Removable Element**

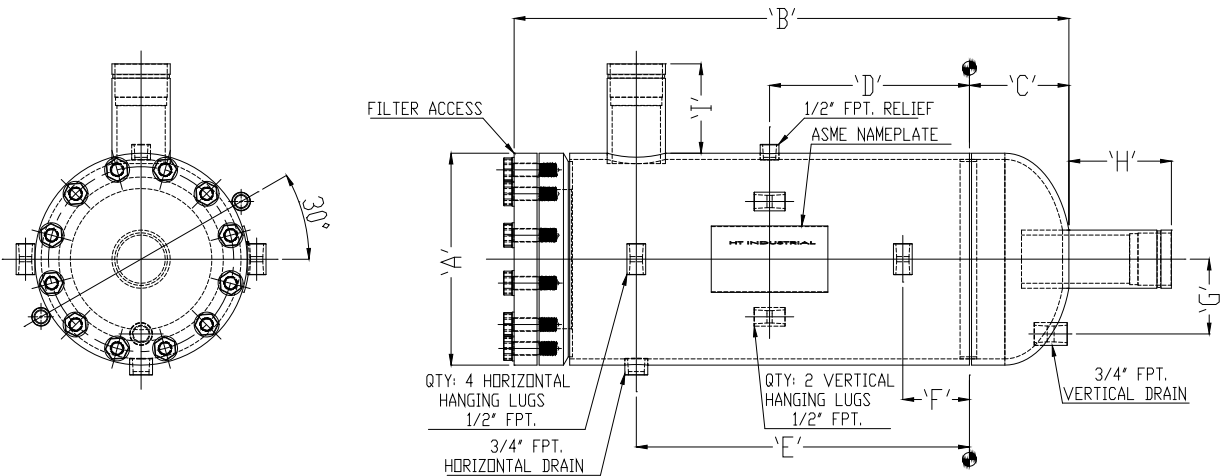


Features:

- Designed specifically for reciprocating compressors: Ammonia, Halocarbon, and CO₂ refrigerants.
- Provides oil separation to below 10 ppm.
- Provides longer run time with additional fine particle (0.3 micron) trapping capacity from over sized element.
- Expect 3 psi pressure drop at new. Replace at or before 15 psi pressure drop. Expect 35,000 hrs run time in clean service.
- Horizontal or vertical mounting.
- Constructed in accordance with ASME Sec. VIII Div. 1.
- CRN for all Canadian provinces and territories.
- Removable access cover allows element replacement.
- Rated to 300 °F.
- Oil Float Valve assembly c/w shut off available as optional accessory (FVA-2019). No CRN for float valve.

Volumetric Flow Rate from Compressor Discharge, CFM Rating

Refrigerant		COS-065	COS-150	COS-230	COS-450
Group 1	R-717 (NH ₃) Ammonia, Natural Gas	65	150	230	450
Group 2	R-134a, R-22, R-23, R-290 (Propane), R-404a, R407c, R-410a, R-417a, R-422d, R-434a, R-438a, R-448a, R-449a, R-507a, R-508b, R-513a, R-744 (CO ₂ <350 psig), R-1234yf	55	130	190	390
Group 3	R-744 (CO ₂ over 350 psig)	45	120	NA	NA



Model	DWP Psi	Dimensions in Inches										Inlet/Outlet Size & Type(s)	Access ID inches	Cover Wt. lbs	Weight lbs
		A	B	C	D	E	F	G	H	I					
COSM-065	750	8 ⁵ / ₈	31 ¹ / ₈	4 ¹ / ₈	12	21 ¹ / ₂	3	3	5 ³ / ₈	5 ¹ / ₂	2" B/W (Sch 40 & 80) c/w 2-1/8" ODS	5 ⁷ / ₈	21	140	
COSM-150	600	12 ³ / ₄	33 ⁵ / ₈	6 ¹ / ₈	12	20	4	4 ¹ / ₂	6	5 ³ / ₈	3" B/W (Sch 40 & 80) c/w 3-1/8" ODS	8 ³ / ₈	54	290	
COSM-230	400	16	39 ¹ / ₂	5 ³ / ₄	13 ¹ / ₂	21 ¹ / ₂	5 ¹ / ₂	5 ¹ / ₂	4	4	4" B/W (Sch 40)	9 ¹ / ₁₆	50	350	
COSM-450	400	20	59	6 ¹³ / ₁₆	22	39	5	6	4	4	5" B/W (Sch 40)	9 ¹ / ₁₆	50	600	